

OFFICIAL



## **INFORMATION FOR LOCAL RESIDENTS & BUSINESSES**

### **Important Notice**



***Keep up to date with the latest information:***

Please refer to the event website  
for the latest news and updates:  
**[adelaidegrandfinal.com.au](http://adelaidegrandfinal.com.au)**



OFFICIAL

## IMPORTANT NOTICE

Dear Residents and Business Owners,

**RE: 2025 bp ADELAIDE GRAND FINAL INFORMATION**

This letter is to advise you of road closures associated with the staging of the bp Adelaide Grand Final. The event will take place from 27-30 November 2025, with a Drive Day and Speedway on Wednesday 26 November 2025.

Information enclosed:

1. Public Road Closures
2. Emergency Contacts
3. Wednesday Track Day
4. Precinct Closure
5. Track Barrier Build and Dismantle
6. Local Vehicle Access
7. Local Pedestrian Access
8. Concert Related Road Closures (Note significant changes for the 2025 event)
9. Concert Times
10. Aviation Activities
11. Noise Impacts
12. Contact Details

We sincerely appreciate your understanding and patience during this period.

If you have any questions or require further information please contact me via email at [info@adelaidegrandfinal.com.au](mailto:info@adelaidegrandfinal.com.au) or call 08 8429 2500.

Yours Sincerely,

South Australian Motor Sport Board

## 1. PUBLIC ROAD CLOSURES

The closure of all main arterial roads inclusive of Bartels Road, Hutt Street, Dequetteville Terrace, Wakefield Road, East Terrace and Flinders Street East will be closed from 6:00am Friday 21<sup>st</sup> of November 2025.

Table 1 – Public Road Closure & Opening Summary

Item	Road ↓	Direction	Impacting	Close		Open			
				Date	Time	Date	Time		
1	Ring Route								
1.1	Fullarton Road Left Hand Slip Lane onto Wakefield Road	Northbound	Access to Wakefield Road	Thu. 20-Nov-25	9:00am	Thu. 4-Dec-25	6:00am		
1.2	Dequetteville Terrace	Northbound	Bartels Road to Rundle Road	Fri. 21-Nov-25	6:00am	Tue. 2-Dec-25	6:00am		
1.3	Dequetteville Terrace	Southbound	Rundle Road to Fullarton Road				3:00pm		
1.4	Dequetteville Terrace	Northbound	Fullarton Road to Bartels Road						
1.5	Fullarton Road Left Lane	Northbound	Northbound road reduced to one lane only						
2	Parklands Roads								
2.1	Bartles Road	Both Directions	Traversing parklands via this road	Fri. 21-Nov-25	6:00am	Tue. 2-Dec-25	6:00am		
2.2	Wakefield Road	Both Directions	Traversing parklands via this road			Thu. 4-Dec-25	6:00am		
3	Adelaide Roads								
3.1	Harvey Street	Northbound	Access to Wakefield Road	Mon. 17-Nov-25	9:00am	Thu. 4-Dec-25	6:00am		
3.2	East Terrace	Both Directions	Bartels Road to Wakefield Street	Fri. 21-Nov-25	6:00am				
3.3	East Terrace	Northbound	Access to Wakefield Street						
3.4	Flinders Street	Both Directions	East of Hutt Street						
3.5	Nil Street	Both Directions	Access to East Terrace						
3.6	East Terrace	Both Directions	Grenfell to Pirie/Bartels						
3.7	Hutt Street	Both Directions	Pirie/Bartels to iFould Street						
3.8	Flinders Street	Eastbound	Access to Hutt Street						
3.9	Tucker Street	Eastbound	Access to Hutt Street						
3.10	Pirie Street	Eastbound	Access to Hutt Street						
3.11	Cleo Lane	Both Directions	Access Closed			Tue. 2-Dec-25	6:00am		
3.12	Halifax Street	Both Directions	East Terrace to Hutt Street	Sat. 29-Nov-25	10:00pm			Sat. 29-Nov-25	11:15pm
3.12	Halifax Street	Both Directions	East Terrace to Hutt Street	Sun. 30-Nov-25	2:00pm			Sun. 30-Nov-25	12:00am
4	Kent Town Roads								
4.1	Angas Street	Westbound	Access to Dequetteville Terrace	Fri. 21-Nov-25	6:00am	Tue. 2-Dec-25	3:00pm		
4.2	Little Angas Street	Westbound	Access to Dequetteville Terrace						
4.3	Wakefield Street (Kent Town)	Westbound	Access to Dequetteville Terrace						
4.4	Little Wakefield Street	Westbound	Access to Dequetteville Terrace						
4.5	Flinders Street (Kent Town)	Westbound	Access to Dequetteville Terrace / Bartels Road						

*\*NOTE: The above is a summary of the Event Road closures only. Further daily road closures for other track build activities, such as the overtrack pedestrian bridges, are in addition to the road closures listed above.*

The roads will have a staggered re-opening time. Bartels Road and Dequetteville Terrace between Bartels Rd and Rundle Rd will re-open at **6:00am Tuesday 2<sup>nd</sup> December 2025**. The other section of Dequetteville Terrace between Bartels Road and Wakefield Road will re-open at **3:00pm Tuesday 2<sup>nd</sup> December 2025**.

Wakefield Road, East Terrace and Flinders Street East will re-open at **6:00am Thursday 4<sup>th</sup> December 2025**

## 2. EMERGENCY CONTACTS

In an Emergency please phone:

**Police Emergency – 000**

Police Assistance – 131 444

## 3. WEDNESDAY TRACK DAY

To be held on the bp Adelaide Grand Final Circuit on Wednesday 26<sup>th</sup> November between 9:00am and 2:15pm. Access restrictions to the circuit will apply.

#### 4. PRECINCT CLOSURE

The precinct closure to members of the public will extend from 12:01am Saturday 22<sup>nd</sup> November to 11:59pm Monday 1<sup>st</sup> December (10 Days).

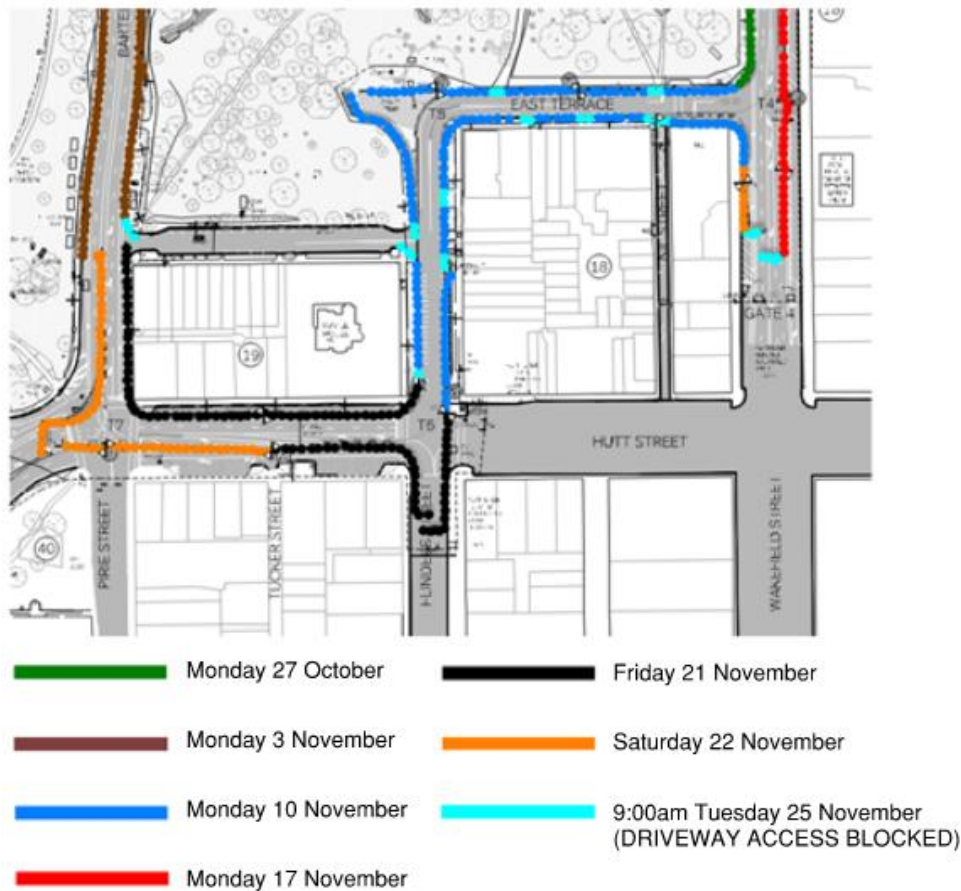
Please note that as a local resident or business, you will still be permitted access to the precinct as outlined within section headings 6 & 7.

#### 5. TRACK BARRIER BUILD AND DISMANTLE

Installation of concrete barriers will commence within the residential part of the circuit from Monday 10<sup>th</sup> November and conclude on Tuesday 25<sup>th</sup> November.

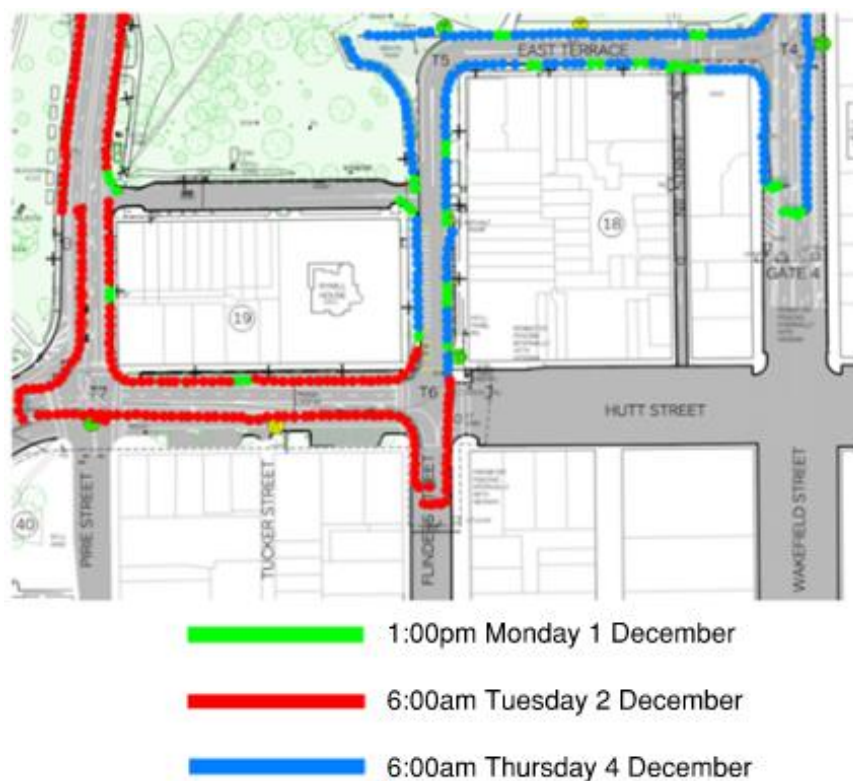
Please see below for detailed track build program. Driveway access to your residence will be closed from the track barrier installation at 9:00am Tuesday 25<sup>th</sup> November.

Figure 1 - Track Build Program



The removal of track barriers on public roads will commence on Monday 1<sup>st</sup> December and is expected to be completed by Thursday 4<sup>th</sup> December 2025.

Figure 2 - Track Dismantle Program



## 6. LOCAL VEHICLE ACCESS

All vehicle access will be via the Event Gate 4, located on Wakefield Road approximately 100m east of Hutt Street. All access to the circuit will require you to display the correct credential on your vehicle and to carry the correct pass for yourself and any passenger in the vehicle. These need to be checked by security each time you enter the circuit. Further correspondence regarding distribution of credentials will be issued shortly.

### *Friday 2<sup>nd</sup> November*

All roads close at 6:00am. Local traffic, including CBC school drop-off & pick-up, will be permitted entry to Wakefield Road via the Hutt Street end. There will be a hard road closure at the corner of East Tce and Wakefield, at which point security will be checking credentials and passes for local residents and Event personnel. The Event Security Hut will be installed outside of CBC College on Wakefield Road. Driveway access to properties will be maintained as detailed in **Figure 1** until 9:00am Tuesday 25<sup>th</sup> November.

### *Tuesday 25<sup>th</sup> November (9:00am) – Monday 1<sup>st</sup> December (1:00pm)*

From 9:00am Tuesday 25<sup>th</sup> November, final installation of track barriers will commence and prohibit driveway access until 1:00pm Monday 1<sup>st</sup> December. After this time, driveway access will be reinstated as per **Figure 2**.

Residential vehicle access will be restricted during the below listed daily circuit closures as detailed in Table 1 below.

Table 2 – Daily Circuit Closures

Description	Day / Date	Circuit Closed	Circuit Open	Circuit Crossing Times
Track Day	Wednesday 26 November	9:00am	2:30pm	
ADLGF Day 1	Thursday 27 November	7:00am	6:15pm	09:55, 11:50, 12:45, 14:40 & 16:30
ADLGF Day 2	Friday 28 November	7:00am	5:45pm	09:25, 11:00, 13:10, 14:35 & 15:10
ADLGF Day 3	Saturday 29 November	7:00am	5:45pm	09:45, 10:55, 12:25, 13:05 & 14:30
ADLGF Day 4	Sunday 30 November	7:00am	5:45pm	09:40, 11:20, 12:20 & 14:25

*\*These times are subject to track activity running on schedule.*

**Monday 1<sup>st</sup> December (1:00pm) – Thursday 4<sup>th</sup> December (6:00am)**

Post-event track infrastructure removal will continue throughout this period under the local road closure. Resident vehicle access will remain via Gate 4 until Wakefield Road, East Tce and Flinders East are opened on 6:00am Thursday 30<sup>th</sup> November.

## 7. LOCAL PEDESTRIAN ACCESS

As detailed in Section 3, the precinct will be closed to the public between Saturday 22<sup>nd</sup> November 12:01am through to Monday 1<sup>st</sup> December 11:59pm (10 Days).

During this period, the most convenient local resident and business pedestrian access to the Rymill House and Nil Street pockets is detailed below. Resident gate keys will be distributed shortly.

### Nil Street Pocket

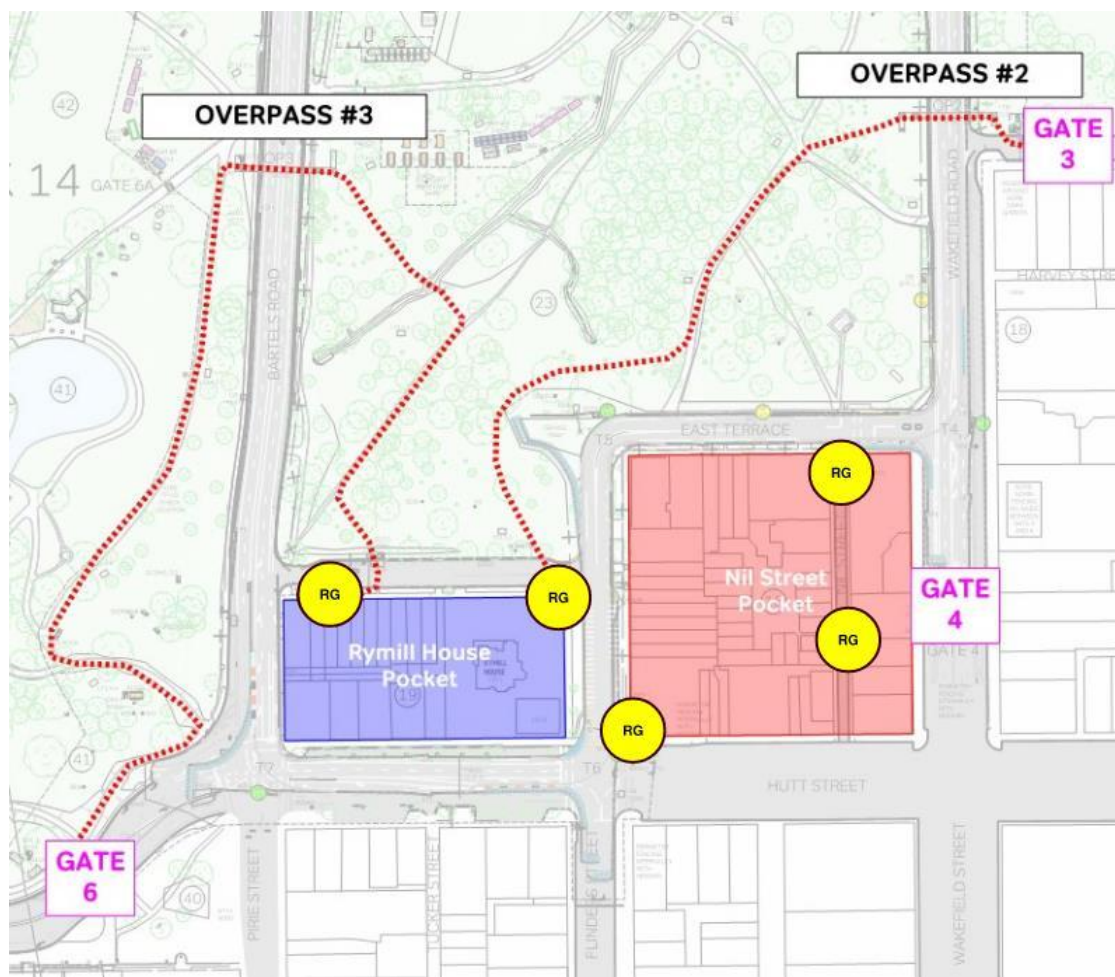
Access via Resident Gate located off Hutt Street.

### Rymill House Street Pocket

- Access via Event Gate 3 (located on the south side of Wakefield Road and East Tce) via Overpass #2 (over Wakefield Road)
- Access via Event Gate 6 (located on East Tce 100m up from Grenfell St) via Overpass #3 (over Bartels Road)

Accessibility access will be available via the Track Crossing located adjacent Overpass #3 on Bartels Road at nominated times during track activity.

Figure 3 – Residential Pedestrian Access Points



## 8. CONCERT RELATED ROAD CLOSURES

Concerts will be held on Saturday 29 November and Sunday 30 November, commencing at approximately 5:00pm and concluding at approximately 11:00pm each evening.

To allow for the safe post-race concert egress for patrons, a road closure schedule will be in place.

### Saturday Schedule:

Saturday night's concert will be in King Rodney Park / Ityamaitipina (Prince Alfred College Oval, Park 15).

From 10:00pm to 12 midnight on Saturday 29 November 2025, the following roads will be closed:

- **Grenfell Street** between Union Street and East Terrace (\*soft closure at Frome Street and Pulteney Street)
- **East Terrace** between Rundle Road and Grenfell Street

### Sunday Schedule:

Sunday night's concert will be held in Pakapakanthi / Victoria Park West (Park 16).

From 2:00pm to 12 midnight on Sunday 30 November 2025, the following roads will be closed:

- **Halifax Street** *between East Terrace and St John's Street*
- **East Terrace** *between Wilson Street and Gilles Street*

From 9:00pm to 12 midnight on Sunday 30 November 2025, the following roads will be closed:

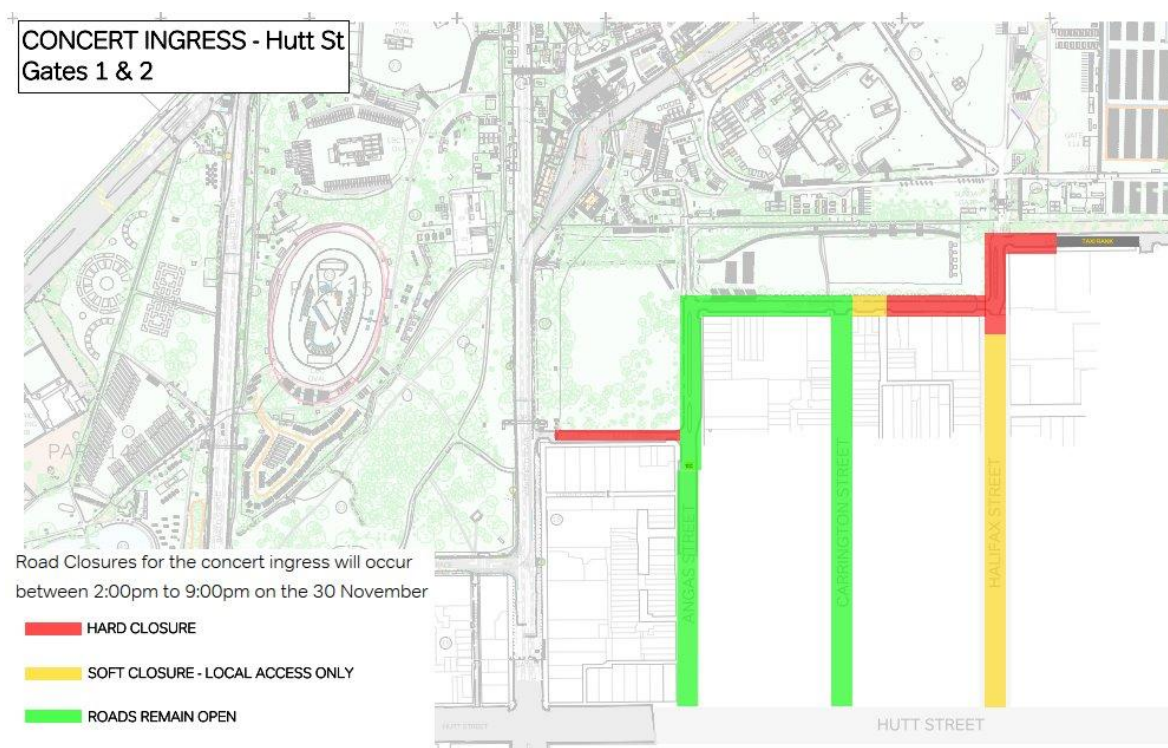
- **Halifax Street** *between East Terrace and Hutt Street*<sup>^</sup>
- **East Terrace** *between Gate 3 and Gilles Street*
- **Wakefield Street** *between Gate 4 and Hutt Street*
- **Angas Street** *from East Terrace to a point 30 meters west.*
- **Carrington Street** *from East Terrace to a point 30 meters west*
- **St John Street** *at Halifax Street*
- **Power Street** *at Halifax Street*
- **Corryton Street** *at Halifax Street*
- **Kate Court** *at Halifax Street*
- **Marion Street** *at Halifax Street*
- **Tomsey Street** *at Halifax Street*

From 10:00pm to 12 midnight on Sunday 30 November 2025, the following roads will be closed:

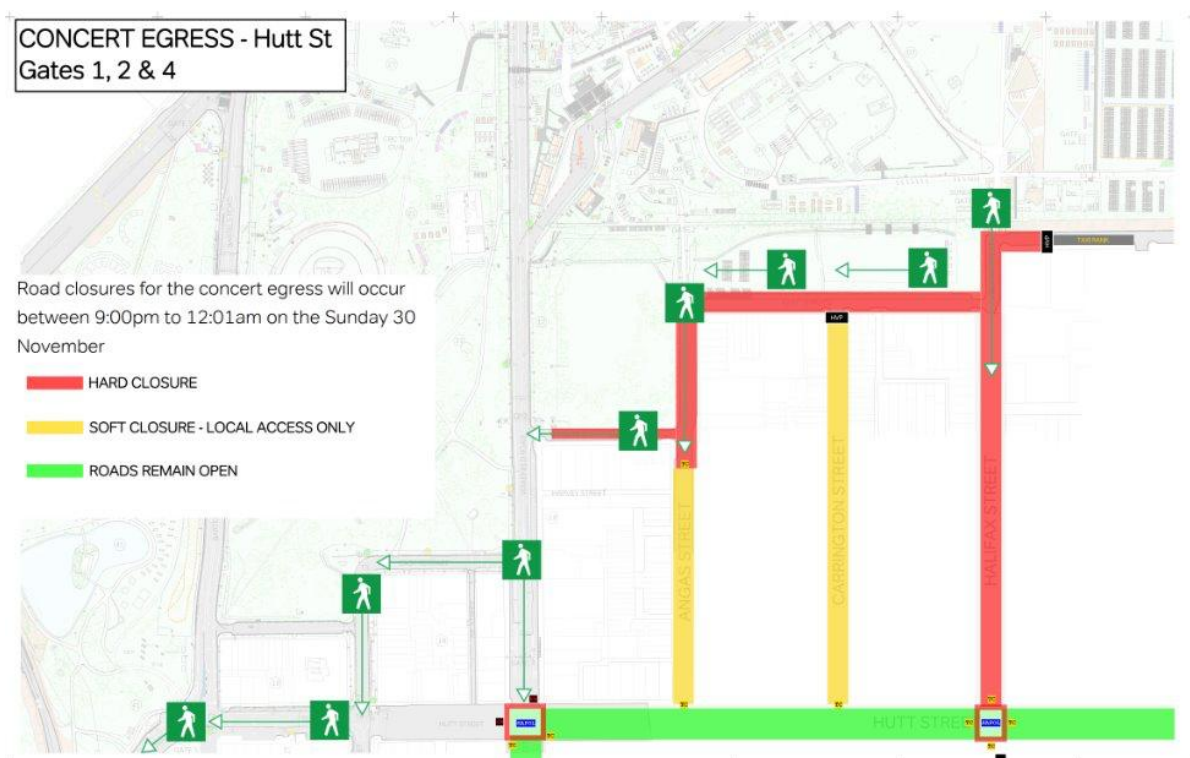
- **Grenfell Street** *between Union Street and East Terrace (\*soft closure at Frome Street and Pulteney Street)*
- **East Terrace** *between Rundle Road and Grenfell Street*

<sup>^</sup>**Note:** Vehicle access for residents will be maintained during these times for most locations, with the exception of Halifax Street between East Terrace and St John Street. There may be times that vehicles will be required to wait briefly, contingent upon the crowd density at the time.

Figure 4 – Concert Ingress



### Figure 5 – Concert Egress



## 9. CONCERT TIMES

Saturday 29 November	Sunday 30 November
Dem Mob 5:30pm	Oscar the Wild 5:40pm
My Cherie 6:30pm	Amyl and the Sniffers 6:30pm
JET 7:30pm	AC/DC 8:00pm
Lenny Kravitz 9:00pm	

*\*The event may change schedules and performance times - add, withdraw, reschedule or substitute artists and/or vary the event program.*

Concerts will conclude at approximately 11:00pm.

## 10. AVIATION ACTIVITIES

Friday 28 November	Saturday 29 November	Sunday 30 November
Roulette Display 3:25pm	Roulette Display 10:40am	Roulette Display 10:50am
	Fast Jet Display 2:48pm	Fast Jet Display 2:46pm
	P8 Display 3:08pm and 3:17pm	RAAF Aerial Flypast 3:02pm

*\*Subject to confirmation & conditions at the time. Note this schedule is subject to change.*

## 11. **NOISE IMPACTS**

Increased noise levels are expected at times, with race and entertainment activities happening across the event weekend. Please see the table below for a summary of key activities and times.

Please note this is not an exhaustive list and times are subject to change. For the latest information and updates, please visit the event website [adelaidegrandfinal.com.au](http://adelaidegrandfinal.com.au).

Date	Activity	Approximate Time
Wednesday 26 November	Wednesday Track Day	9:00am to 2:15pm
	Grand Final Parade	4:45pm to 5:00pm
	Grand Final Parade	6:05pm to 6:20pm
	Speedway	6:00pm to 10:00pm
Thursday 27 November	Track action	8:00am to 6:00pm
	Concert sound check	4:30pm to 6:30pm
	Speedway	6:00pm to 9:55pm
Friday 28 November	Track action	8:20am to 5:20pm
	Aviation aerial display	3:25pm
	Speedway	6:24pm to 10:30pm
Saturday 29 November	Track action	8:05am to 5:20pm
	Speedway	9:30am to 2:00pm
	Aviation aerial display	10:40am
	Aviation aerial display	2:48pm
	Aviation aerial display	3:08pm
	Aviation aerial display	3:17pm
	Concert	5:00pm to 11:00pm
Sunday 30 November	Track action	8:15am to 5:20pm
	Aviation aerial display	10:50am
	Concert sound check	11:00am to 12:00pm
	Aviation aerial display	2:46pm
	Aviation aerial display	3:02pm
	Speedway	9:30am to 2:00pm
	Concert	5:00pm to 11:00pm

*\*Schedule is subject to change.*

## 12. **CONTACT DETAILS**

If you have any questions or require further information, please contact:

South Australian Motor Sport Board

Email: [info@adelaidegrandfinal.com.au](mailto:info@adelaidegrandfinal.com.au)

Phone: 08 8429 2500